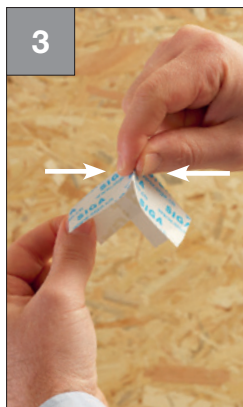




## Wall: Timber construction *Airtight on the inside*

### Timber connection at internal & external corners



- Unfold a short piece of Corvum
- **Make a cut in** centre of side without backing strip
- Fold over at a 90° angle
- Bond together

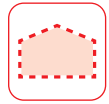
- Prefold to fit tightly into corner
- Fold back backing strip



- Stick down Corvum corner and press on well
- Repeat first in every inside corner

- Then connect the inside corners:
- Position Corvum accurately in corner and bond side without backing strip first, pressing on firmly
- Remove backing strip and press on

## Wall: Timber construction *Airtight on the inside*



### Tips and tricks



#### Using the backing strip for simple and quick application:

- First fold back the front end of the backing strip, this way, the backing strip is ready at hand and can be quickly removed later
- Then apply Corvum to fit



Corvum<sup>®</sup> 30/30

P. 124



## Wall: Timber construction *Airtight on the inside*

### Wall joint - timber construction outside corner



- Affix Corvum to wall with folded edge flush against outside edge
- Add about 3 cm at each end and cut off



- Remove backing strip
- Unfold

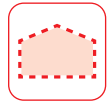


- Cut into the corner from the inside out, approximately bisecting the angle
- **Start cut just short of corner!**



- Fold around outside corner
- Press on

## Wall: Timber construction *Airtight on the inside*



- Repeat on each side



- Fit a short piece of Corvum into corner
- Remove the backing strip
- Press on
- Repeat on each side



### How it should look:

- Outside corner is permanently airtightly sealed with Corvum 30/30



Corvum® 30/30

P. 124