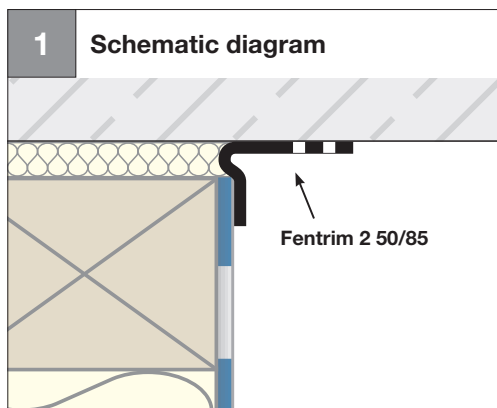




Wall: Solid construction *Windtight and rainproof on the outside*

Joining facade membrane to solid wall construction



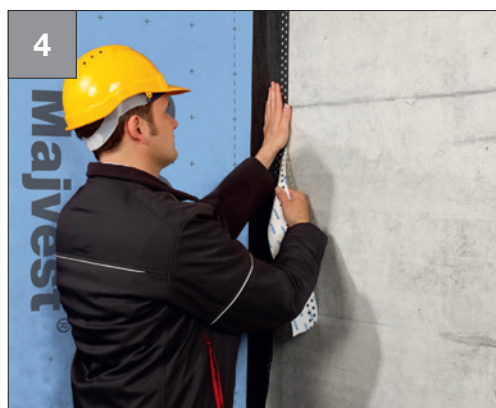
- Joining facade membrane to **non-plastered** masonry or concrete



- Affix 50 mm side to facade membrane

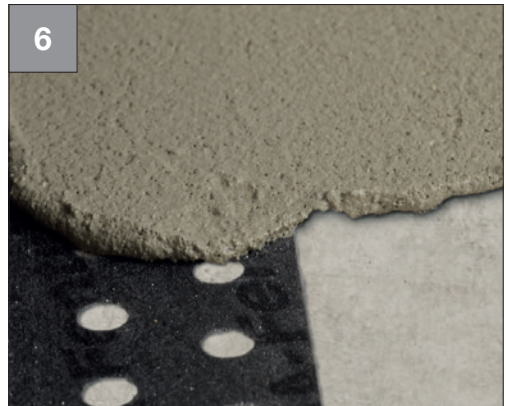
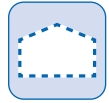


- Unfold Fentrim 2 50/85
- Press on firmly



- Remove protruding backing strip step by step
- Fixing
- Apply free from stress and tension
- Press on firmly

Wall: Solid construction Windtight and rainproof on the outside



How it should look:

- Facade membrane bonded to non-plastered masonry or concrete
- The width of the substrate to be plastered covered by Fentrim must not exceed 60 mm without counting the Fentrim perforated zone.



Fentrim® 2 50/85

P. 143